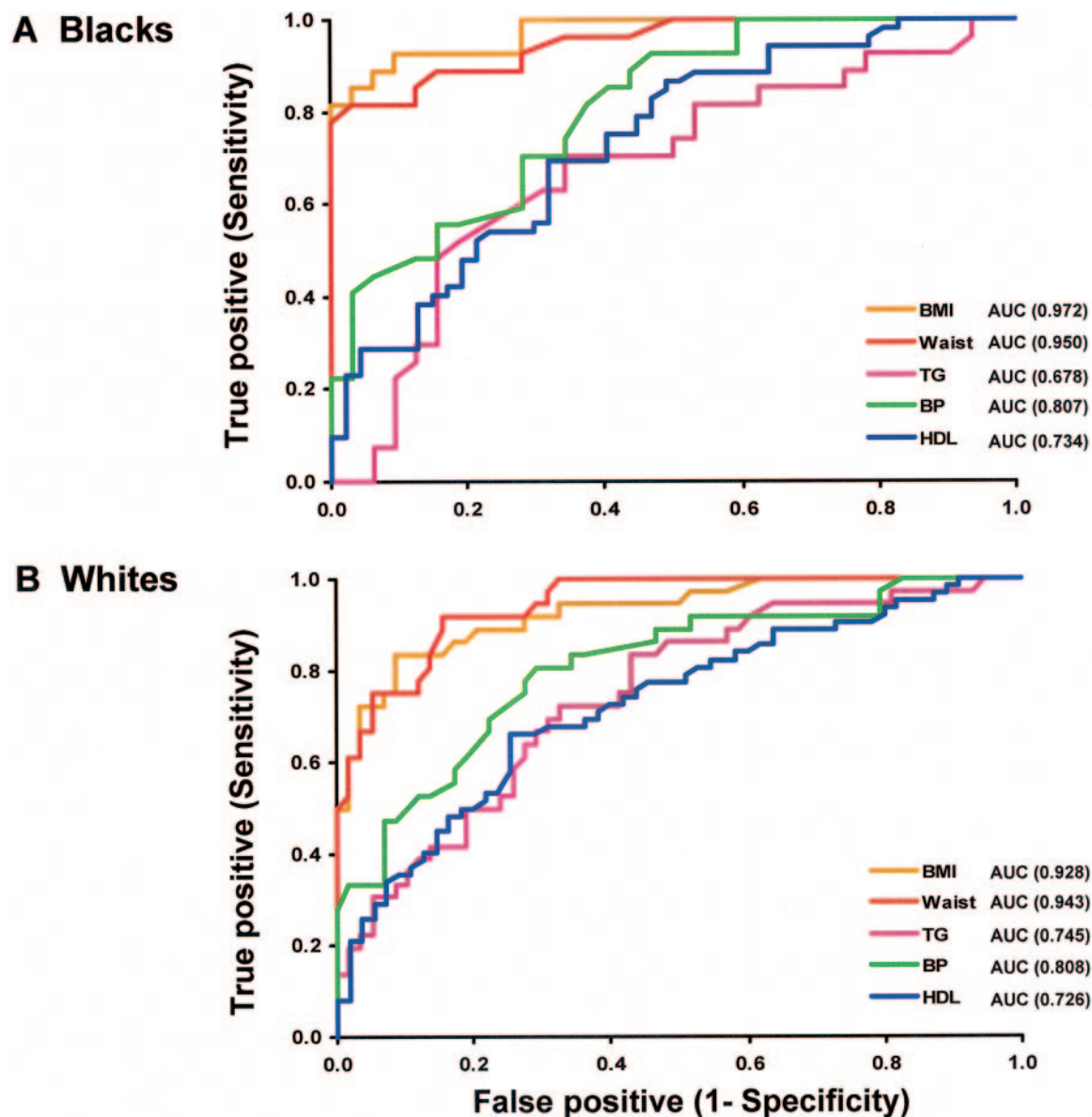


# Errata

Lee S, Gungor N, Bacha F, Arslanian S: Insulin resistance: link to the components of the metabolic syndrome and biomarkers of endothelial dysfunction in youth. *Diabetes Care* 30:2091–2097, 2007

Panels A and B of Fig. 4 in the above-listed article were not properly labeled. The correct figure appears below.



**Figure 4**—ROC curves of individual components of metabolic syndrome as markers of insulin resistance. Insulin resistance was defined based on cutoffs of insulin sensitivity (lower 10th percentile) derived from the non-overweight group (cutoffs, blacks:  $4.6 \text{ mg} \cdot \text{kg}^{-1} \cdot \text{min}^{-1} \text{ per } \mu\text{U/ml}$ ; whites:  $4.4 \text{ mg} \cdot \text{kg}^{-1} \cdot \text{min}^{-1} \text{ per } \mu\text{U/ml}$ ). AUC, area under the curve; TG, triglycerides.