

**Association Between Circulating Soluble Receptor for Advanced Glycation  
End Products (sRAGE) and Atherosclerosis:  
Observations from the Dallas Heart Study**

Jason B. Lindsey, MD<sup>1</sup>; James A. de Lemos, MD<sup>1</sup>; Francesco Cipollone, MD<sup>2</sup>;  
Colby R. Ayers, MS<sup>1</sup>; Anand Rohatgi, MD<sup>1</sup>; David A. Morrow, MD, MPH<sup>3</sup>;  
Amit Khera, MD, MSc<sup>1</sup>; Darren K. McGuire, MD, MHSc<sup>1</sup>

From the <sup>1</sup>Donald W. Reynolds Cardiovascular Clinical Research Center, the University of  
Texas Southwestern Medical Center, Dallas, Texas; <sup>2</sup>Italian Society for the Study of  
Atherosclerosis-Abruzzo Section, Chieti, Italy; and the <sup>3</sup>Brigham and Women's Hospital,  
Boston, Massachusetts.

**Correspondence and reprint requests:**

Darren K. McGuire, MD, MHSc  
E-mail: darren.mcguire@utsouthwestern.edu

Submitted 12 January 2009 and accepted 2 April 2009.

This is an uncopyedited electronic version of an article accepted for publication in *Diabetes Care*. The American Diabetes Association, publisher of *Diabetes Care*, is not responsible for any errors or omissions in this version of the manuscript or any version derived from it by third parties. The definitive publisher-authenticated version will be available in a future issue of *Diabetes Care* in print and online at <http://care.diabetesjournals.org>.

*Objective:* To determine the association between circulating soluble RAGE (sRAGE) and coronary atherosclerosis.

*Research Design and Methods:* Using data from the Dallas Heart Study, a probability-based population sample, the association between plasma levels of sRAGE and coronary artery calcium (CAC) was assessed among 2571 subjects with complete imaging and sRAGE data.

*Results:* An inverse, graded association was observed between sRAGE quartiles and CAC, with CAC prevalence of 28.5% in quartile 1 compared with 15.7% in quartile 4 ( $p < 0.0001$ ). After multivariable adjustment, the associations between sRAGE levels in the 1<sup>st</sup> and 2<sup>nd</sup> quartiles (vs 4<sup>th</sup> quartile) and CAC remained statistically significant (adjusted OR 1.71, 95% CI 1.2 to 2.4; and 1.5, 95% CI 1.0 to 2.1, respectively).

*Conclusions:* sRAGE is a novel biomarker that is inversely associated with coronary atherosclerosis. The role of sRAGE in the pathobiology of atherosclerosis and its potential prognostic and therapeutic implications warrant further investigation.

The transmembrane receptor for advanced glycation end products (RAGE), expressed on a variety of cells including endothelial, smooth muscle, and mononuclear cells, binds advanced glycation end products and other pro-inflammatory ligands and modulates activity of several pro-thrombotic and pro-inflammatory mediators (1,2). Results from animal models provide evidence supporting a role for ligand-RAGE binding in the development and progression of atherosclerosis (3-5).

A circulating isoform of RAGE, soluble RAGE (sRAGE), has been identified (6,7) and theorized to competitively inhibit transmembrane RAGE-ligand binding thereby attenuating atherosclerosis (3-5). This hypothesis has been supported by animal experiments, where administration of sRAGE to mouse models retarded the progression of atherosclerosis (3-5).

Few human studies have been performed evaluating the association between circulating sRAGE and human atherosclerosis (8,9). The objective of the present study was to determine the association between sRAGE and atherosclerosis.

## RESEARCH DESIGN AND METHODS

The Dallas Heart Study is a probability-based population sample of adults living in Dallas County with intentional oversampling of black subjects. A detailed study design and variable definitions have previously been published (10); subjects were recruited 7/00 to 1/02. The present study comprises 2571 subjects with complete sRAGE and coronary artery calcium (CAC) data. Cardiac electron-beam computed tomography scanning was performed using an Imatron C-150XP scanner with 3-mm slices; duplicate scans were performed within 2 minutes. The Agatston method was used to determine CAC scores and recorded as the

average of the 2 scans. Due to skewness, CAC was analyzed as a categorical variable, with prevalent CAC defined by a score >10, a data-derived threshold that optimizes the signal-to-noise ratio to minimize false-positive rates (11).

Venous blood was collected into ethylenediaminetetraacetic acid tubes and centrifuged for 1430g for 15 minutes at 4°C. The plasma component was stored at -80°C. Immunoassays for sRAGE were performed in 384-well microtiter plates on thawed frozen plasma samples at Biosite, Inc (San Diego, CA). The sRAGE assay was a sandwich ELISA with a minimum detection limit of 0.11 ng/mL. Intra- and inter-assay coefficients of variation ranged from 6.4% to 8.3% at sRAGE levels of 1.2 and 31.2 ng/mL, respectively. For analyses, subjects were divided into quartiles of sRAGE. Univariable and multivariable logistic regression analyses, with adjustment for traditional atherosclerosis risk factors, were performed to determine associations between sRAGE quartiles and CAC; additional analyses were performed evaluating sRAGE as a continuous variable using a logarithmic transformation of sRAGE levels. Crude and adjusted odds ratios are presented with 95% confidence intervals. Probability values of <0.05 were considered statistically significant. The study protocol was approved by the University of Texas Southwestern Medical Center institutional review board; all participants provided written informed consent.

## RESULTS

The mean age was  $44 \pm 10$  yrs with 69% non-white subjects and 56% women. Levels of sRAGE were inversely associated with a number of risk factors, including increasing age, diabetes, hypertension, smoking, and metabolic syndrome; compared with white and Hispanic subjects, blacks had significantly lower median sRAGE values.

There was a graded, step-wise, inverse association between CAC prevalence and increasing quartile of sRAGE, from 28.7% in the first quartile (lowest sRAGE levels) to 15.4% in the fourth quartile ( $p < 0.0001$ ; Figure 1). In multivariable analyses, an independent association remained between a sRAGE values in quartile 1 and 2 compared with values in quartile 4 (Figure 1). Analyzed as a continuous variable using log-transformation of sRAGE, the association with CAC remained statistically significant in a multivariable model.

The inverse associations between sRAGE and prevalent CAC were qualitatively similar across selected subgroups stratified by diabetes status; metabolic syndrome status and race (data not shown).

## **DISCUSSION**

The principal novel observation of the present study is that lower levels of sRAGE are independently associated with a greater prevalence of coronary atherosclerosis, demonstrated in a large probability-based population study. These associations remained statistically significant after multivariable adjustment, and were evident in the overall population as well as across several key subgroups. Due to small sample sizes in some subsets, validation of the findings in additional studies is needed in key subgroups, including those with diabetes.

Our observations are concordant with the limited data investigating the relationship between circulating sRAGE and atherosclerosis (8,9). In a small cohort of non-diabetic Italian men, Falcone, et al. demonstrated that subjects with angiographic coronary artery disease (CAD) had lower levels of sRAGE than age-matched controls without CAD (8). Also, Koyama et al. showed that sRAGE was inversely associated with carotid intima-medial thickness (9). Although both studies are provocative, they are limited by small sample sizes and the

discrete populations studied. These reports coupled with the present results provide compelling support for a possible link between sRAGE and atherosclerosis.

Indeed, our observations lend validation to prior experimental observations supporting the plausible contribution of sRAGE to the development and progression of atherosclerosis (3,4). These concordant observations are promising and should prompt further evaluation of the sRAGE/RAGE pathway to better understand the pathobiology and to explore the potential of this pathway as a novel target for the prevention and treatment of vascular disease. The cross-sectional design of our study allows only a demonstration of association and conclusions cannot be drawn regarding causality. However, evidence from several elegant animal studies demonstrates that exogenous administration of sRAGE suppresses the progression of atherosclerosis (3-5). Therefore, either exogenous administration of sRAGE or therapies that amplify endogenous sRAGE levels may offer an attractive pathway to treat or prevent vascular disease (12). Future investigation into sRAGE modulation as a therapeutic modality is needed.

In summary, within a large multiethnic population, we observed an independent and graded association between lower sRAGE levels and coronary atherosclerosis; therefore, sRAGE could prove to be a useful biomarker for the prediction of atherosclerosis and cardiovascular disease risk. External validation of our data in other populations, especially in cohorts with cardiovascular outcomes, is crucial. With the data from prior basic science experiments and our hypothesis-generating data, sRAGE appears to hold promise not only as a biomarker for atherosclerosis prediction, but also as a potential therapeutic target for the treatment

and prevention of atherosclerosis and should be investigated further.

#### **ACKNOWLEDGEMENTS**

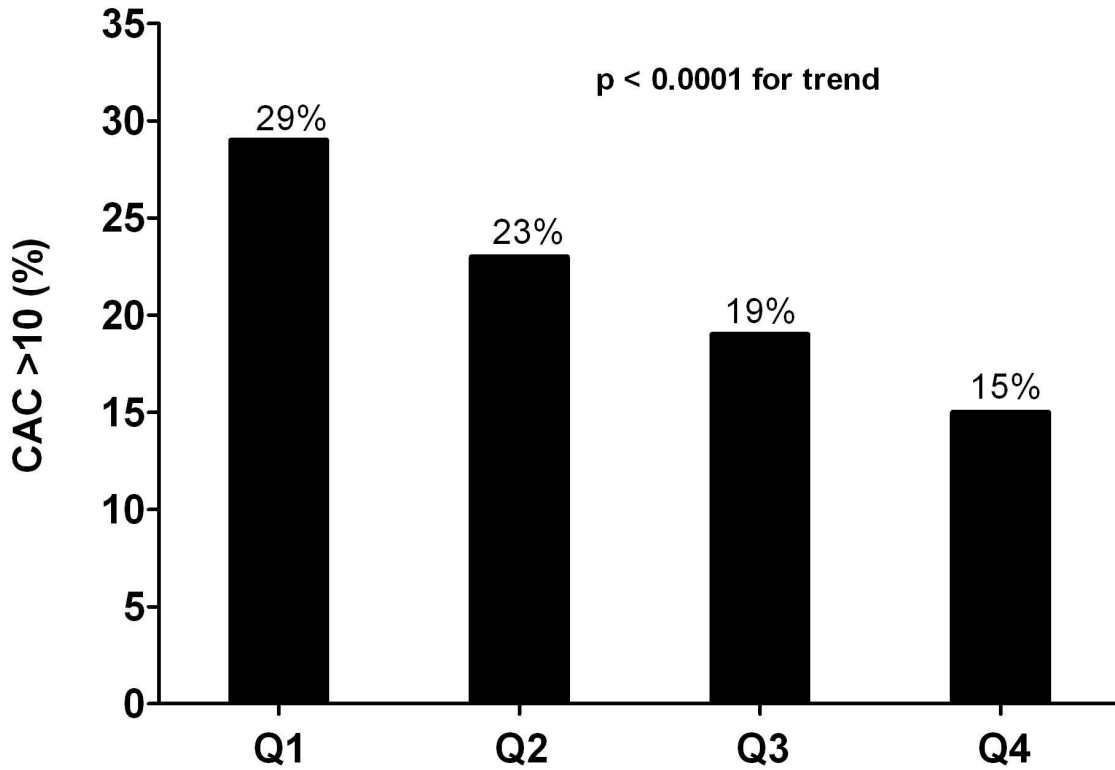
The Dallas Heart Study was funded by the Donald W. Reynolds Foundation (Las Vegas, Nevada). Dr. Lindsey is a recipient of the American College of Cardiology Foundation/Merck Fellowship Award, which supported this research project.

**Disclosures:** Dr. McGuire receives research/grant support from Biosite, Inc. and is a consultant for Tethys Biosciences. Dr. de Lemos receives research/grant support from Biosite, Inc. and is a consultant for Tethys Biosciences. Dr. Morrow is a consultant for Biosite, Inc. Dr. Lindsey, Cipollone, Ayers, Rohatgi, and Khera have no potential conflicts to disclose.

## REFERENCES

1. Brett J, Schmidt AM, Yan SD, Zou YS, Weidman E, Pinsky D, Nowygrod R, Nepper M, Przysiecki C, Shaw A, Migheli A, Stern D. Survey of the distribution of a newly characterized receptor for advanced glycation end products in tissues. *Am J Pathol* 1993;143:1699-712.
2. Lindsey JB, Cipollone F, Abdullah SM, McGuire DK. Receptor for advanced glycation end-products (RAGE) and soluble RAGE (sRAGE): cardiovascular implications. *Diab Vasc Dis Res* 2009;6:7-14.
3. Park L, Raman KG, Lee KJ, Lu Y, Ferran LJ, Jr., Chow WS, Stern D, Schmidt AM. Suppression of accelerated diabetic atherosclerosis by the soluble receptor for advanced glycation endproducts. *Nat Med* 1998;4:1025-31.
4. Bucciarelli LG, Wendt T, Qu W, Lu Y, Lalla E, Rong LL, Goova MT, Moser B, Kislinger T, Lee DC, Kashyap Y, Stern DM, Schmidt AM. RAGE blockade stabilizes established atherosclerosis in diabetic apolipoprotein E-null mice. *Circulation* 2002;106:2827-35.
5. Wendt T, Harja E, Bucciarelli L, Qu W, Lu Y, Rong LL, Jenkins DG, Stein G, Schmidt AM, Yan SF. RAGE modulates vascular inflammation and atherosclerosis in a murine model of type 2 diabetes. *Atherosclerosis* 2006;185:70-7.
6. Yonekura H, Yamamoto Y, Sakurai S, Petrova RG, Abedin MJ, Li H, Yasui K, Takeuchi M, Makita Z, Takasawa S, Okamoto H, Watanabe T, Yamamoto H. Novel splice variants of the receptor for advanced glycation end-products expressed in human vascular endothelial cells and pericytes, and their putative roles in diabetes-induced vascular injury. *Biochem J* 2003;370:1097-109.
7. Park IH, Yeon SI, Youn JH, Choi JE, Sasaki N, Choi IH, Shin JS. Expression of a novel secreted splice variant of the receptor for advanced glycation end products (RAGE) in human brain astrocytes and peripheral blood mononuclear cells. *Mol Immunol* 2004;40:1203-11.
8. Falcone C, Emanuele E, D'Angelo A, Buzzi MP, Belvito C, Cuccia M, Geroldi D. Plasma levels of soluble receptor for advanced glycation end products and coronary artery disease in nondiabetic men. *Arterioscler Thromb Vasc Biol* 2005;25:1032-7.
9. Koyama H, Shoji T, Yokoyama H, Motoyama K, Mori K, Fukumoto S, Emoto M, Shoji T, Tamei H, Matsuki H, Sakurai S, Yamamoto Y, Yonekura H, Watanabe T, Yamamoto H, Nishizawa Y. Plasma level of endogenous secretory RAGE is associated with components of the metabolic syndrome and atherosclerosis. *Arterioscler Thromb Vasc Biol* 2005;25:2587-93.
10. Victor RG, Haley RW, Willett DL, Peshock RM, Vaeth PC, Leonard D, Basit M, Cooper RS, Iannacchione VG, Visscher WA, Staab JM, Hobbs HH. The Dallas Heart Study: a population-based probability sample for the multidisciplinary study of ethnic differences in cardiovascular health. *Am J Cardiol* 2004;93:1473-80.
11. Jain T, Peshock R, McGuire DK, Willett D, Yu Z, Vega GL, Guerra R, Hobbs HH, Grundy SM. African Americans and Caucasians have a similar prevalence of coronary calcium in the Dallas Heart Study. *J Am Coll Cardiol* 2004;44:1011-7.
12. Hudson BI, Harja E, Moser B, Schmidt AM. Soluble levels of receptor for advanced glycation endproducts (sRAGE) and coronary artery disease: the next C-reactive protein? *Arterioscler Thromb Vasc Biol* 2005;25:879-82.

**Figure 1.** Coronary artery calcium prevalence with unadjusted and adjusted odds ratios by sRAGE quartile. \*Adjusted for age, sex, race, current smoking, diabetes mellitus, hypertension, total cholesterol, low HDL-C, and triglycerides



N (total=2571)	642	643	643	643
Unadjusted OR	2.2	1.7	1.2	—
Adjusted OR	1.7	1.5	1.2	—
95% CI	1.2-2.4	1.0-2.1	0.9-1.8	—
p-value	0.003	0.03	0.22	—