

SUPPLEMENTARY DATA

A list of other members of the research committee of type 1 diabetes in the Japan Diabetes Society

Haruhiko Osawa (Department of Molecular and Genetic Medicine, Ehime University Graduate School of Medicine); Minoru Okubo (Department of Endocrinology and Metabolism, Toranomon Hospital); Hiroshi Kajio (Department of Endocrinology and Metabolism, National Center for Global Health and Medicine); Kyuzi Kamoi (Center of Diabetes and Endocrine & Metabolism Disease, Nagaoka Red Cross Hospital & Department of Health and Nutrition, Niigata Prefecture University); Yumiko Kawabata (Department of Endocrinology, Metabolism and Diabetes, Kinki University School of Medicine); Jo Satoh (Department of Diabetes and Metabolism, Iwate Medical University); Ikki Shimizu (Department of Internal Medicine, Ehime Prefectural Imabari Hospital); Kazuma Takahashi (Department of Diabetes and Metabolism, Iwate Medical University); Shoichiro Tanaka (Third Department of Internal Medicine, Interdisciplinary Graduate School of Medicine and Engineering, University of Yamanashi); Masao Nagata (Department of Internal Medicine, Kakogawa Municipal Hospital); Sumie Fujii (Department of Internal Medicine, Ishikawa Prefectural Central Hospital); Junnosuke Miura (Diabetes Center, Tokyo Women's Medical University School of Medicine); Satoshi Murao (Diabetes Center, Takamatsu Hospital)

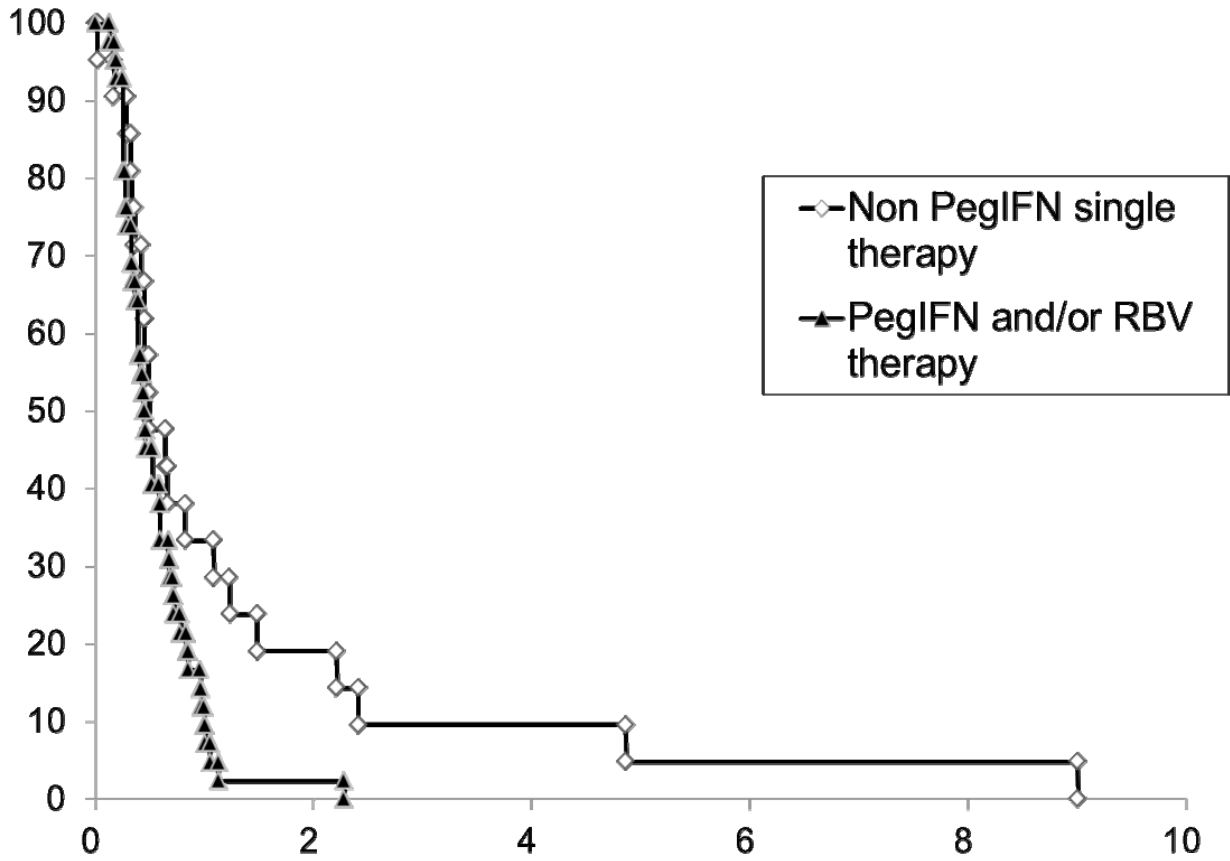
We would like to extend our appreciation to the following doctors who referred the patients to our committee: Kazufumi Dohmen (Department of Internal Medicine, Chihaya Hospital); Takahiro Fujioka (Department of Internal Medicine, Mishuku Hospital); Jun Fujita (Department of Gastroenterology, KKR Sapporo Medical Center); Tetsuya Fukuda (Department of Diabetes, Sakakibara Heart Institute of Okayama); Yoshihide Fukumoto (Department of Internal Medicine, Fukumoto Clinic); Noriyuki Harima and Michiko Morioka (Department of Internal Medicine, Kofu Kyoritsu Hospital); Takamasa Hasegawa (Department of Medicine II, Kansai Medical University); Michio Hayashi (Department of Diabetes and Endocrinology, NTT Medical Center Tokyo); Yoshinari Hayashi (Department of Internal Medicine, Kariya Toyota General Hospital); Toshiro Honda (Department of Endocrinology and Metabolism, KKR Sapporo Medical Center); Tatsuya Ide (Department of Gastroenterology, Kurume University); Kenro Imaeda (Department of Gastroenterology and Metabolism, Nagoya City University Graduate School of Medical Sciences); Eiichi Imano and Kazuhiro Katayama (Department of Internal Medicine, Osaka Kosei-Nenkin Hospital); Chizuko Inada (Inada Clinic); Hisayo Kato and Satoru Inaba (Department of Internal Medicine, Municipal Tsuruga Hospital); Masanobu Kawakami and San-e Ishikawa (Department of Endocrinology and Metabolism, Saitama Medical Center Jichi Medical University); Isao Kawasaki (Department of Metabolism and Endocrinology, Osaka City General Hospital); Takahiro Kawasaki (Department of Internal Medicine, Teikyo University School of Medicine); Yuzuru Kishitani (Department of Gastroenterology and Endocrinology, Nara Hospital Kinki University Faculty of Medicine); Masanori Yamasaki and Mitsuhsa Komatsu (Department of Aging Medicine and Geriatrics, Division of Medicine, Institute on Aging and Adaptation, Shinshu University Graduate School); Kazunari Miyauchi (Second Department of Internal Medicine, Megumino Hospital); Kazuharu Murakami (Murakami and Tokunaga Clinic); Kazuya Murata (Department of Internal Medicine, Yamada Red Cross Hospital); Etsuko Nagai and Mitsuyoshi Namba (Division of Diabetes and Metabolism, Department of Internal Medicine, Hyogo College of Medicine); Ayako Nakachi (Second Department of Internal Medicine, Graduate School of Medicine, University of the Ryukyus); Hitomi Nakamura (Department of Gastroenterology and Hepatology, Nihon University Itabashi Hospital); Masato Nishino and Hideto Taniguchi (Department of Internal Medicine, Okayama Kyoritsu Hospital); Katsunori Nonogaki (Department of Lifestyle Medicine, Tohoku University Hospital); Munetada Oimomi (Department of Internal Medicine, Kounan

SUPPLEMENTARY DATA

Hospital); Yasuo Oshima (Department of Internal Medicine, Kawasaki Social Insurance Hospital); Yoshinori Sato (Metabolism and Diabetes Center, Tohoku Kouseinekin Hospital); Fumio Sawano (Department of Endocrinology and Metabolic Medicine, Hiroshima Red Cross & Atomic-Bomb Survivors Hospital); Kenji Shima (Department of Medicine, Kawashima Hospital); Tetsuya Suwa and Jun Takeda (Department of Diabetes and Endocrinology, Gifu University School of Medicine); Yoshitaka Taguchi and Tatsuhide Inoue (Center of Diabetes, Endocrinology & Metabolism, Shizuoka General Hospital); Kenji Takahashi (Division of Diabetes, Department of Internal Medicine, Kurashiki Central Hospital); Mizuho Tanaka and Keiko Yanagisawa (Diabetes Center, Tokyo Women's Medical University School of Medicine); Toru Tanaka (Department of Diabetes, Endocrinology and Rheumatology, Japanese Red Cross Kyoto Daiichi Hospital); Kazuhito Tawaramoto (Diabetes and Endocrine Division, Department of Medicine, Kawasaki Medical School); Yasuhiro Terashima (Department of Endocrinology and Metabolism, Daido Hospital); Yuko Tomita (Department of Diabetes, Social Insurance Kurume Daiichi Hospital); Kazuo Tsuji (Department of Metabolism and Diabetes, Nishi Kobe Medical Center); Kazuhisa Tsukamoto (Department of Diabetes and Metabolic Diseases, University of Tokyo Hospital); Ken Yajima (Department of Internal Medicine, Hamamatsu Red Cross Hospital); Tetsuya Yamada, Hirohito Kudo, Hideki Katagiri, and Yoshitomo Oka (Department of Diabetes and Metabolism, Tohoku University Hospital); Masahiro Yamamoto (Department of Endocrinology and Diabetology, Anjo Kosei Hospital)

Supplementary Figure 1. Kaplan-Meier curves showing the progression to type 1 diabetes in relation to duration of IFN therapy

Non-PegIFN, non-pegylated interferon; PegIFN, pegylated interferon; RBV, ribavirin



SUPPLEMENTARY DATA

Supplementary Figure 2. Levels of GADAb in patients with IFN treatment-related type 1 diabetes divided by the presence or absence of AITD

AITD, autoimmune thyroid disease; N.S., not significant. A horizontal bar indicates the mean level of GADAb in each group.

