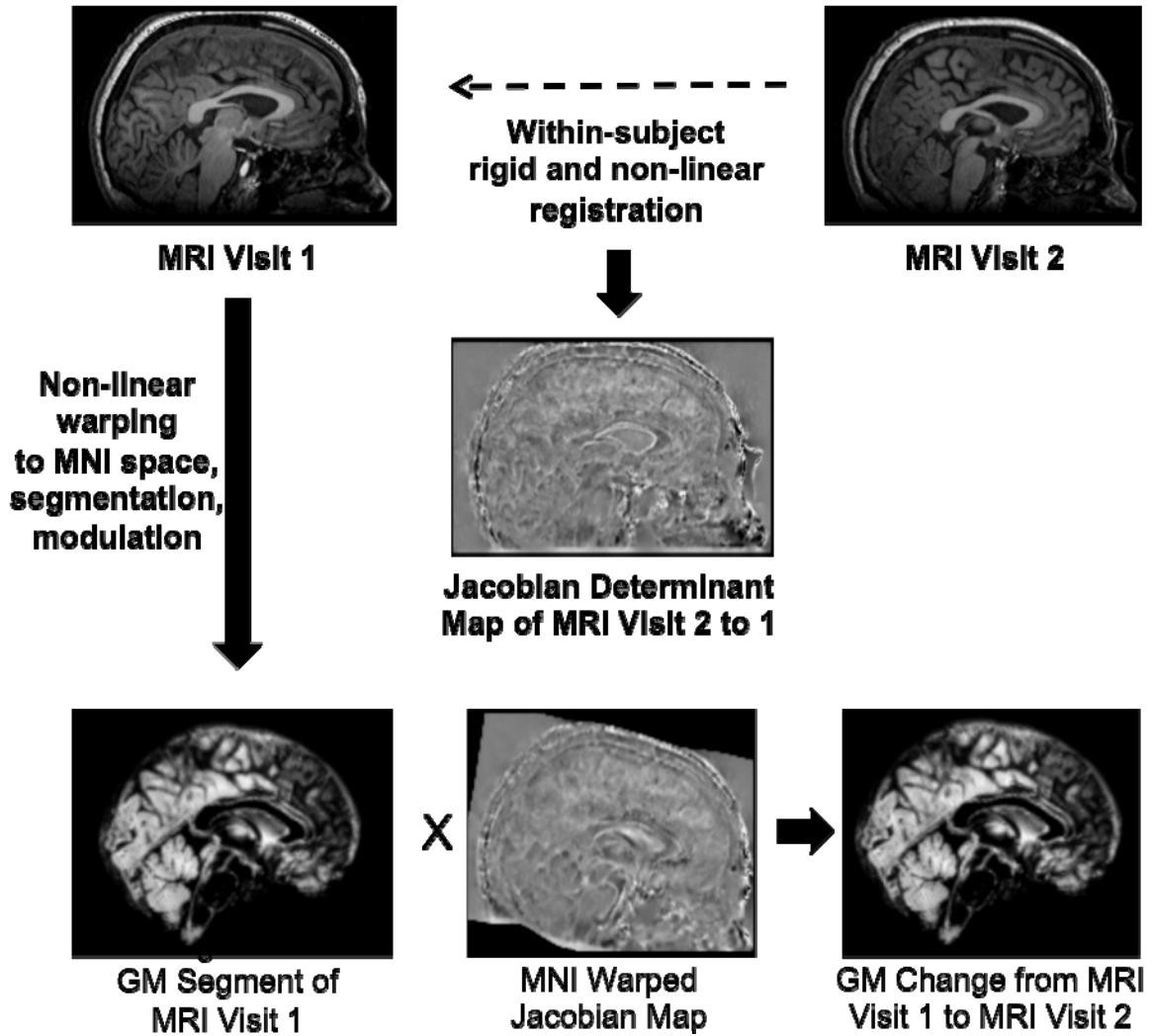


SUPPLEMENTARY DATA

Supplementary Figure 1. A summary schematic of the procedure to derive Jacobian-adjusted gray matter maps used in longitudinal voxel-wise and region of interest analyses.



SUPPLEMENTARY DATA

Supplementary Figure 2. The interrelationship between covariate-adjusted HOMA-IR, a region encompassing hippocampus and parahippocampus, and change in encoding trials 1-5 of the Rey Auditory Verbal Learning Test in 121 participants. Figure 2A represents the relationship between HOMA-IR at follow-up and the change in encoding trials performance between baseline and follow-up. Figure 2B represents the relationship between HOMA-IR at follow-up and the change in hippocampal and parahippocampal gray matter between baseline and follow-up scan sessions. Figure 2C represents the relationship between changes in encoding trials performance and gray matter in hippocampus and parahippocampus between baseline and follow-up scan sessions. Jacobian map values are in arbitrary units.

