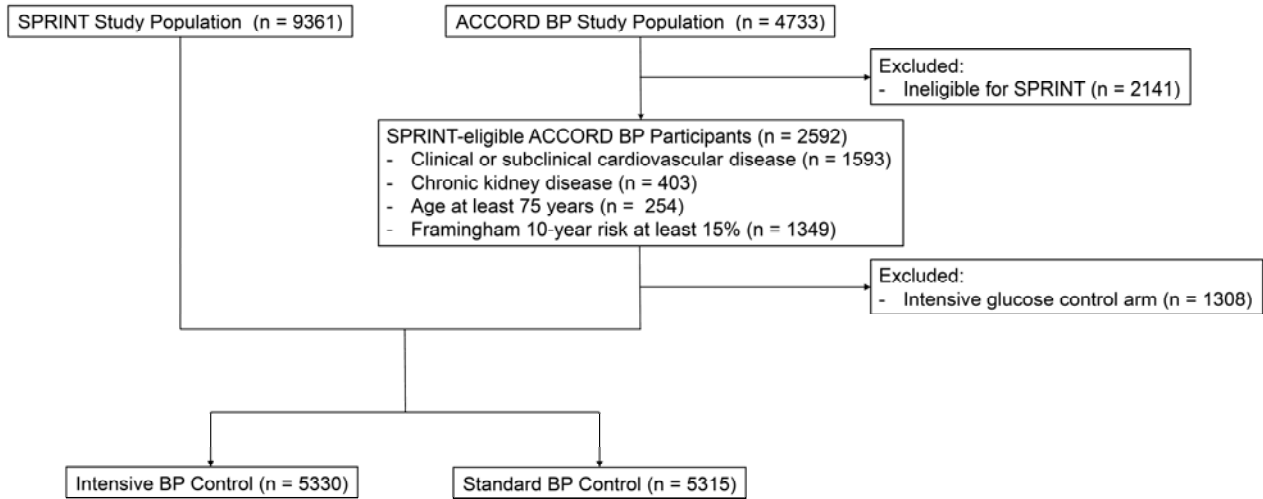
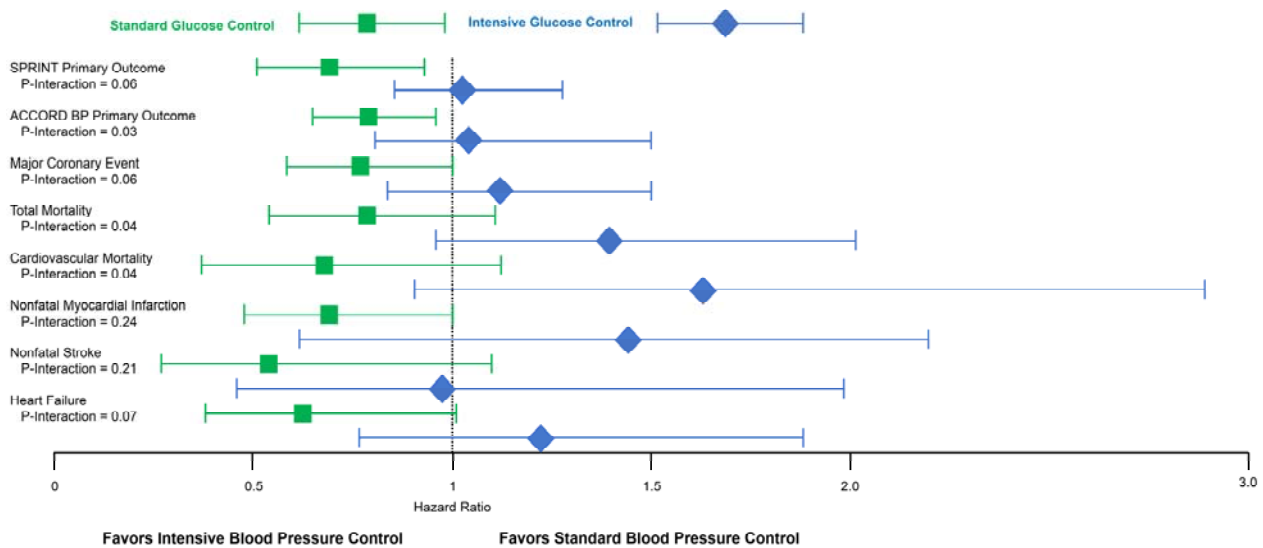


SUPPLEMENTARY DATA

Supplementary Figure 1. CONSORT diagram for pooled analysis of SPRINT and SPRINT-eligible ACCORD BP patients. ACCORD = Action to Control Cardiovascular Risk in Diabetes; BP = blood pressure; SPRINT = Systolic Blood Pressure Intervention Trial

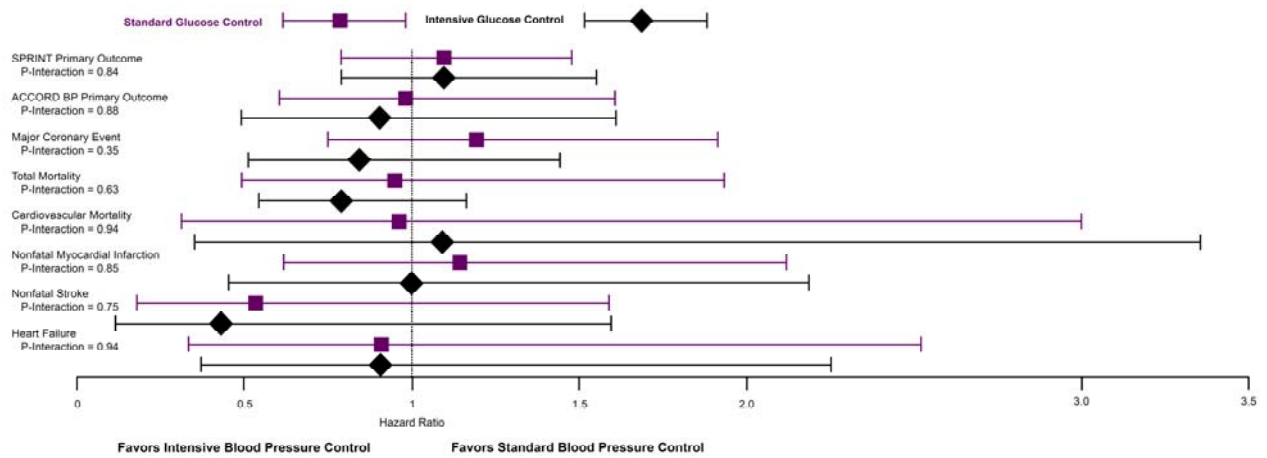


Supplementary Figure 2. Intensive Blood Pressure Control in Patients Receiving and Not Receiving Intensive Glucose Control (SPRINT eligible)



SUPPLEMENTARY DATA

Supplementary Figure 3. Intensive Blood Pressure Control in Patients Receiving and Not Receiving Intensive Glucose Control (SPRINT ineligible)



SUPPLEMENTARY DATA

Supplementary Table 1. Inclusion criteria for ACCORD BP and SPRINT

	Diabetes	Age	Systolic blood pressure	Cardiovascular disease	Chronic kidney disease	Framingham 10-year risk score	Other:
ACCORD BP	<ul style="list-style-type: none"> Stable type 2 diabetes mellitus according to 1997 ADA criteria for >3 months HbA1c 7.5-11% 	<ul style="list-style-type: none"> Age 40-79 years (inclusive) with a history of clinical cardiovascular disease Age 55-79 years (inclusive) without a history of clinical cardiovascular disease 	<ul style="list-style-type: none"> 171-180 mm Hg on 0 or 1 medication 161-170 mm Hg on up to 2 medications 130-160 mm Hg on up to 3 medications 	<ul style="list-style-type: none"> Prior MI Coronary (CABG, PCI, laser atherectomy), carotid (carotid endarterectomy) or peripheral revascularization (lower extremity atherectomy, AAA repair, femoral or popliteal bypass) Angina with ischemic changes, positive exercise test or imaging study >50% diameter stenosis of coronary, carotid or lower extremity artery Ankle brachial index < 0.9 Left ventricular hypertrophy 	N/A	N/A	<ul style="list-style-type: none"> Two of the following: (lipid lowering medication use, untreated LDL-C > 130 mg/dL, HDL-C < 40/50 mg/dL for men/women, BP lowering medication use, SBP ≥140 or DBP ≥95 mm Hg, current cigarette smoking, BMI > 32 kg/m²)
SPRINT	<ul style="list-style-type: none"> Excluded 	<ul style="list-style-type: none"> Age ≥ 50 years 	<ul style="list-style-type: none"> 130-180 mm Hg on 0 or 1 medication 130-170 mm Hg on up to 2 medications 130-160 mm Hg on up to 3 medications 130-150 mm Hg on up to 4 medications 	<ul style="list-style-type: none"> Prior MI PCI, CABG, carotid endarterectomy, carotid stenting, PAD with revascularization, ACS, positive stress test or imaging study >50% diameter stenosis of coronary, carotid or lower extremity artery AAA ≥5 cm Coronary artery calcium score ≥400 Agatston units within the prior 2 years Ankle brachial index ≤0.90 within the past 2 years Left ventricular hypertrophy 	<ul style="list-style-type: none"> 4-variable MDRD eGFR 20 to <60 mL/min/1.73 m² 	<ul style="list-style-type: none"> ≥ 15% 	<ul style="list-style-type: none"> Age ≥ 75 years is an additional risk factor

Legend: AAA = abdominal aortic aneurysm; ADA = American Diabetes Association; BMI = body mass index; CABG = coronary artery bypass grafting; DBP = diastolic blood pressure; GFR = glomerular filtration rate; HDL-C = high density lipoprotein cholesterol; LDL-C = low density lipoprotein cholesterol; MDRD = Modification of Diet in Renal Disease; MI = myocardial infarction; PCI = percutaneous coronary intervention; SBP = systolic blood pressure

SUPPLEMENTARY DATA

Supplementary Table 2. Baseline characteristics of pooled SPRINT and SPRINT-eligible ACCORD BP participants according to blood pressure control strategy

Characteristic	Intensive BP Control (n = 5330)	Standard BP Control (n = 5315)	P-Value
Age, years	67.4 (9.3)	67.4 (9.4)	0.92
Female sex, n (%)	1884 (35.3)	1838 (34.6)	0.41
History of any cardiovascular disease, n (%)	1332 (25)	1328 (25)	0.99
Chronic kidney disease, n (%)	1431 (26.8)	1402 (26.4)	0.87
Age at least 75 years, n (%)	1374 (25.8)	1378 (25.9)	0.86
Framingham risk score at least 15%, n (%)	3202 (60.1)	3206 (60.3)	0.80
Diabetes, n (%)	652 (12.2)	632 (11.9)	0.59
Systolic blood pressure, mm Hg	139.7 (15.9)	139.8 (15.5)	0.74
Diastolic blood pressure, mm Hg	77.8 (11.8)	77.7 (11.9)	0.83
Estimated glomerular filtration rate, ml/min/1.73 m ²	73.7 (22.1)	73.6 (21.7)	0.82
Non-high density lipoprotein cholesterol (mg/dL)	139 (40)	139 (40)	0.77
Blood pressure medication use, n (%)	4324 (81.1)	4314 (81.2)	0.96
Statin use, n (%)	2449 (45.9)	2520 (47.4)	0.10
Aspirin use, n (%)	2806 (52.6)	2697 (50.7)	0.052
Framingham 10-year cardiovascular risk score, %	19.4 (10.8)	19.5 (10.8)	0.66
Hemoglobin A1c*, %	8.3 (1.1)	8.3 (1.1)	0.66
Body mass index, kg/m ²	30.1 (5.8)	30.1 (5.7)	0.42

Legend: BP = blood pressure

SUPPLEMENTARY DATA

Supplementary Table 3. Baseline characteristics of SPRINT-eligible and SPRINT-ineligible ACCORD BP participants

Characteristic	SPRINT (n = 9361)	SPRINT-eligible ACCORD BP		SPRINT-ineligible ACCORD BP (n = 2141)
		Standard Glucose Control (n = 1284)	Intensive Glucose Control (n = 1308)	
Age, years	67.9 (9.4)	63.8 (7.9)	64 (7.7)	61.3 (4.7)
Female sex, n (%)	3332 (35.6)	390 (30.4)	424 (32.4)	1444 (67.4)
History of any cardiovascular disease, n (%)	1877 (20.1)	783 (61)	810 (61.9)	0
Chronic kidney disease, n (%)	2650 (28.3)	183 (14.3)	220 (16.8)	0
Age at least 75 years, n (%)	2636 (28.2)	116 (9)	138 (10.6)	0
Framingham risk score at least 15%, n (%)	5737 (61.3)	671 (52.3)	678 (51.8)	0
Diabetes, n (%)	0	1284 (100)	1308 (100)	2141 (100)
Systolic blood pressure, mm Hg	139.7 (15.6)	140.3 (16.6)	140 (15.8)	138.2 (15.3)
Diastolic blood pressure, mm Hg	78.1 (11.9)	75 (10.7)	74.9 (11)	77.2 (9.7)
Estimated glomerular filtration rate, ml/min/1.73 m ²	71.7 (20.6)	87.9 (25.4)	86.3 (26.1)	97.1 (31.2)
Non-high density lipoprotein cholesterol (mg/dL)	137 (39)	150 (48)	149 (49)	143 (41)
Blood pressure medication use, n (%)	8479 (90.6)	159 (12.4)	150 (11.5)	122 (5.7)
Statin use, n (%)	4054 (43.3)	915 (71.3)	886 (67.7)	1264 (59)
Aspirin use, n (%)	4756 (50.8)	747 (58.2)	746 (57)	980 (45.8)
Framingham 10-year cardiovascular risk score, %	20.1 (10.9)	14.7 (9.2)	14.5 (9.3)	5.6 (3.8)
Hemoglobin A1c*, %	NR	8.3 (1.1)	8.3 (1.1)	8.3 (1.1)
Body mass index, kg/m ²	29.9 (5.8)	32 (5.2)	31.6 (5.5)	32.6 (5.7)

SUPPLEMENTARY DATA

Supplementary Table 4. Primary and secondary outcomes in pooled SPRINT and SPRINT-eligible ACCORD BP participants

Outcome	Intensive BP Control (n = 5330)		Standard BP Control (n = 5315)		Hazard ratio (95% CI)	P-Value for Comparison of Intensive vs. Standard BP Control	P-Value for Interaction between BP Control and T2DM
	Events (n)	% per year	Events (n)	% per year			
Cardiovascular death, nonfatal MI, nonfatal stroke	244	1.37	329	1.87	0.73 (0.62-0.87)	<0.001	0.62
Cardiovascular death, nonfatal MI, nonfatal stroke, any revascularization, heart failure	425	2.44	540	3.16	0.77 (0.68-0.87)	<0.001	0.76
Coronary death, nonfatal MI, unstable angina	228	1.28	268	1.53	0.83 (0.70-1.00)	0.044	0.45
Any death	204	1.12	271	1.49	0.75 (0.62-0.90)	0.002	0.73
Cardiovascular death	55	0.30	92	0.51	0.60 (0.43-0.84)	0.003	0.62
Nonfatal MI	65	0.36	85	0.38	0.74 (0.54-1.03)	0.07	0.42
Nonfatal stroke	74	0.41	93	0.52	0.81 (0.59-1.09)	0.17	0.22
Heart failure	88	0.49	138	0.77	0.62 (0.48-0.81)	<0.001	0.93

Legend: BP = blood pressure; CI = confidence interval; MI = myocardial infarction